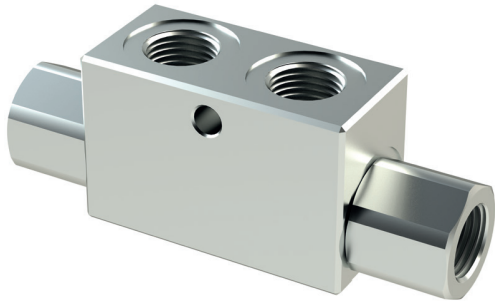


# VRDE VALVOLE DI BLOCCO A DOPPIO EFFETTO DOUBLE ACTING PILOT CHECK VALVES

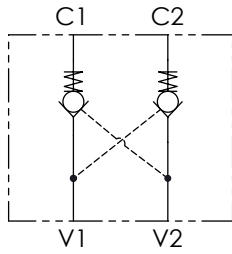


**CODICE ORDINAZIONE**  
ORDERING CODE

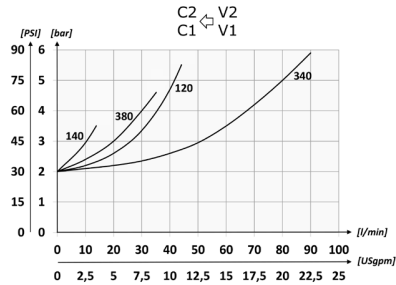
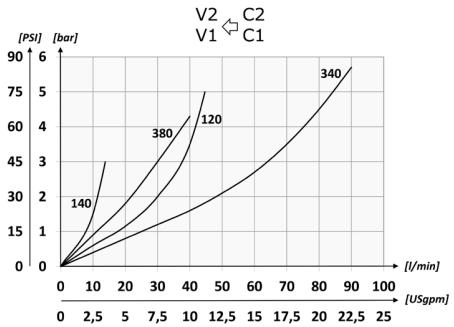
01	02
<b>VRDE</b>	

<b>01</b>	VALVOLE DI BLOCCO A DOPPIO EFFETTO (DOUBLE ACTING PILOT CHECK VALVES)	<b>VRDE</b>
<b>02</b>	DIMENSIONE (SIZE)	BSPP 1/4
		BSPP 3/8
		BSPP 1/2
		BSPP 3/4

**SCHEMA IDRAULICO / HYDRAULIC CIRCUIT**

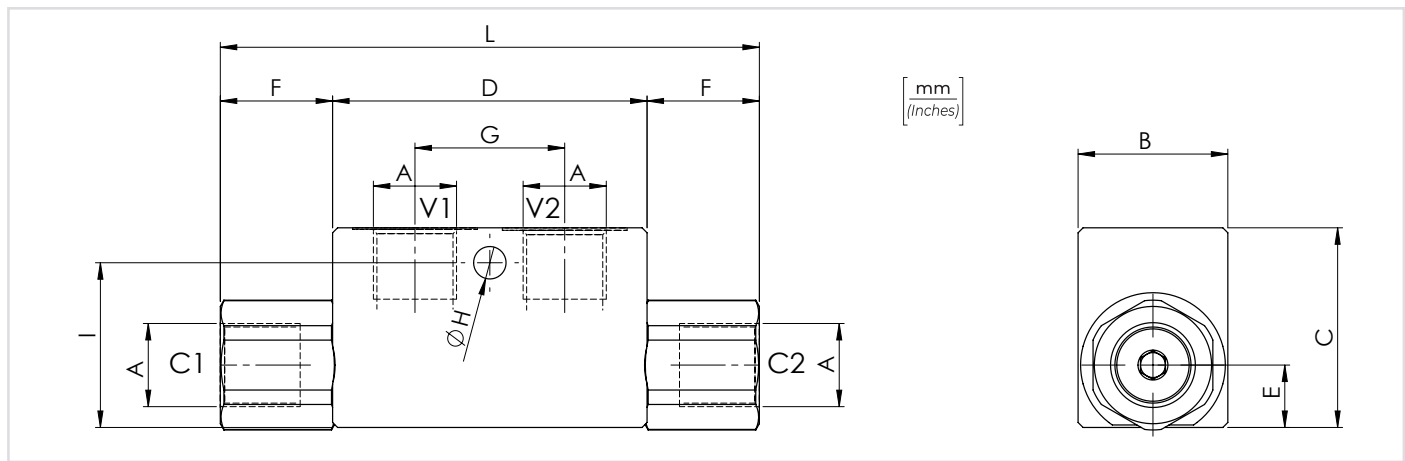


**PERFORMANCES**



**DATI TECNICI / TECHNICAL DATA**

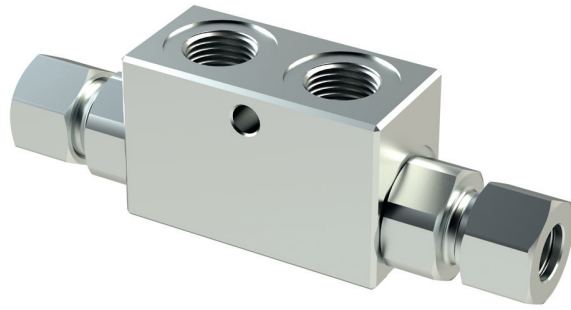
<b>Olio idraulico</b> - Mineral oil	ISO 6743/4 (DIN 51524)
<b>Viscosità olio</b> - Oil viscosity	15-250 mm <sup>2</sup> /s (15 to 250 cSt)
<b>Classe di contaminazione max</b> Max contamination index	ISO 4406:1999 Classe 19/17/14
<b>Temperatura dell'olio</b> - Oil temperature	-20°C +80°C -4°F +176°F
<b>Temperatura ambiente</b> - Environment temperature	-20°C +50°C -4°F +122°F
È indispensabile l'utilizzo di un filtro per proteggere la valvola (filtrazione consigliata 15 µm) It is necessary a filter use to protect the valve (advised filtration 15 µm)	
<b>Trafilamento massimo</b> Max leakage	0,25 cm <sup>3</sup> /min - 5 gocce/min 0,015 in <sup>3</sup> /min - 5 drops/min



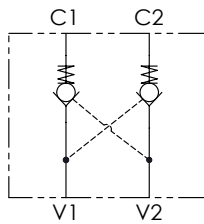
**CARATTERISTICHE TECNICHE / TECHNICAL CHARACTERISTICS**

TIPO TYPE	A	PORTATA MAX MAX FLOW l/min-USgpm	PRESSIONE MAX MAX PRESSURE bar-PSI	B	C	D	E	F	G	H	I	L	PESO APPROX APPROX WEIGHT kg-lbt	RAPPORTO DI PILOTAGGIO PILOT RATIO
VRDE140	BSPP 1/4	15 (4)	350 (5075)	30 (1.18)	40 (1.57)	63 (2.48)	12,5 (0.49)	22,5 (0.89)	30 (1.18)	6,5 (0.26)	33 (1.30)	108 (4.25)	0,64 (1.41)	1:4
VRDE380	BSPP 3/8	35 (9.2)		35 (1.38)	50 (1.97)	82 (3.23)	16,5 (0.65)	31,5 (1.24)	36 (1.42)		35 (1.38)	145 (5.71)	0,60 (1.32)	
VRDE120	BSPP 1/2	45 (11.9)		40 (1.57)	60 (2.36)	100 (3.94)	22,5 (0.89)	46 (1.81)	50 (1.97)	8,5 (0.33)	50 (1.97)	192 (7.56)	1,10 (2.42)	
VRDE340	BSPP 3/4	70 (18.5)											2 (4.40)	

**VRDD** VALVOLE DI BLOCCO A DOPPIO EFFETTO DIN2353  
DIN2353 DOUBLE ACTING PILOT CHECK VALVES



SCHEMA IDRAULICO / HYDRAULIC CIRCUIT



DATI TECNICI / TECHNICAL DATA

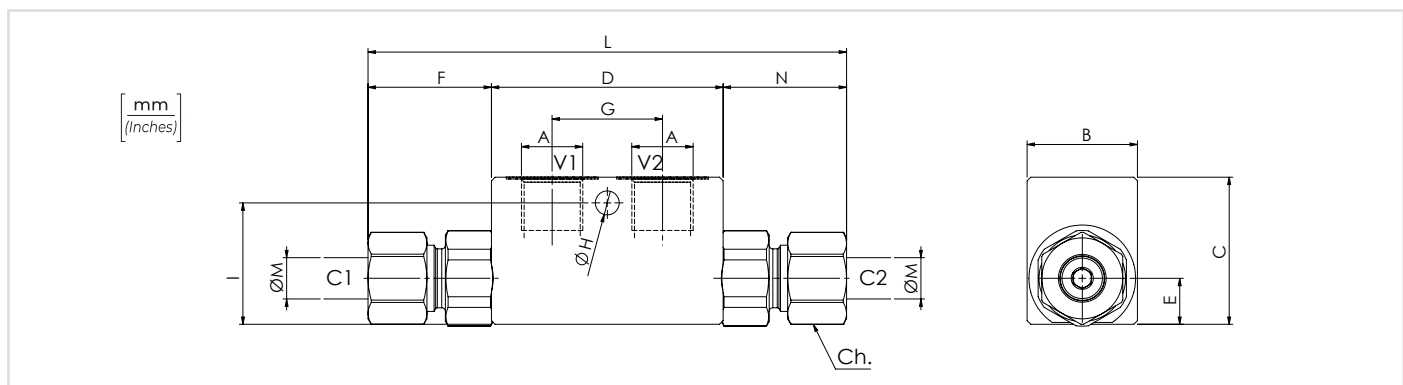
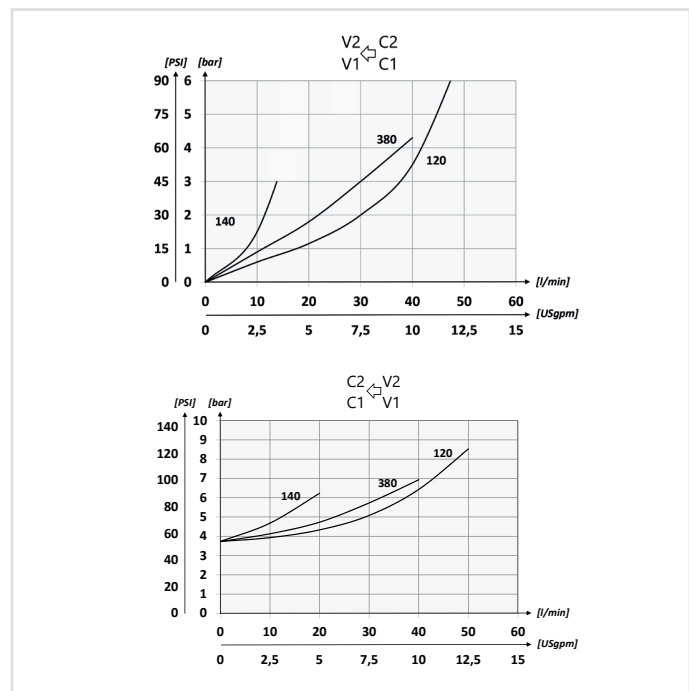
Olio idraulico - Mineral oil	ISO 6743/4 (DIN 51524)
Viscosità olio - Oil viscosity	15-250 mm <sup>2</sup> /s (15 to 250 cSt)
Classe di contaminazione max Max contamination index	ISO 4406:1999 Classe 19/17/14
Temperatura dell'olio - Oil temperature	-20°C +80°C -4°F +176°F
Temperatura ambiente - Environment temperature	-20°C +50°C -4°F +122°F
È indispensabile la presenza di un filtro nel circuito idraulico per proteggere la valvola (filtrazione consigliata 15 µm)	
A filter into the hydraulic circuit necessary to protect the valve (advised filtration 15 µm)	
Trafilamento massimo Max leakage	0,25 cm <sup>3</sup> /min - 5 gocce/min 0,015 in <sup>3</sup> /min - 5 drops/min

CODICE ORDINAZIONE  
ORDERING CODE

01	02	03
<b>VRDD</b>		

<b>01</b>	VALVOLE DI BLOCCO A DOPPIO EFFETTO DIN2353 (DIN2353 DOUBLE ACTING PILOT CHECK VALVES)	<b>VRDD</b>
<b>02</b>	DIMENSIONE SIZE	BSPP 1/4 <b>140</b>
		BSPP 3/8 <b>380</b>
		BSPP 1/2 <b>120</b>
<b>03</b>	DIMENSIONE TUBO SIZE PIPE	Per tubo Ø 8 - For Ø 8 pipe only for BSPP 1/4 <b>T8</b>
		Per tubo Ø 12 - For Ø 12 pipe standard only for BSPP 1/4 and 3/8
		Per tubo Ø 15 - For Ø 15 pipe standard only for BSPP 1/2

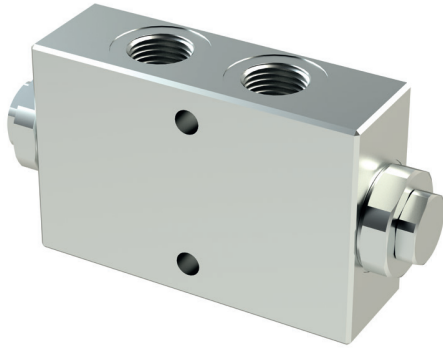
PERFORMANCES



CARATTERISTICHE TECNICHE / TECHNICAL CHARACTERISTICS

TIPO TYPE	A	PORTATA MAX MAX FLOW l/min-USgpm	PRESSIONE MAX MAX PRESSURE bar-PSI	mm - inch										Ch.	PESO APPROX APPROX WEIGHT kg-lbt	RAPPORTO DI PILOTAGGIO PILOT RATIO
				B	C	D	E	F	G	H	I	L	M			
VRDD140T8	BSPP 1/4	10 (2.6)	350 (5075)	30 (1.18)	40 (1.57)	63 (2.48)	12,5 (0.49)	28 (1.10)	30 (1.18)	6,5 (0.26)	35 (1.38)	113 (4.45)	8 (0.31)	17	0,60 (1.32)	1:9
VRDD140		15 (4)						32 (1.26)				127 (5)	12 (0.47)	22	0,64 (1.40)	
VRDD380	BSPP 3/8	35 (9.2)		35 (1.38)	50 (1.97)	82 (3.23)	16,5 (0.65)	33,5 (1.32)	36 (1.42)	149 (5.87)	15 (0.59)	27	1,17 (2.57)	1:4		
VRDD120	BSPP 1/2	45 (11.9)		35 (1.38)	50 (1.97)	82 (3.23)	16,5 (0.65)	33,5 (1.32)	36 (1.42)	149 (5.87)	15 (0.59)	27	1,17 (2.57)			

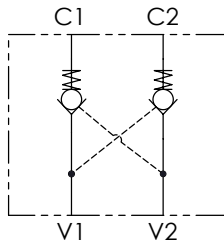
**VRDL** VALVOLE DI BLOCCO PILOTATE A DOPPIO EFFETTO  
DOUBLE ACTING PILOT CHECK VALVES



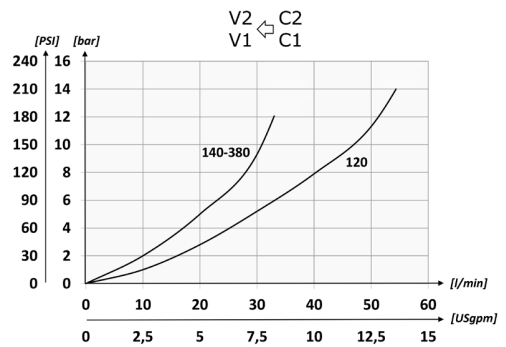
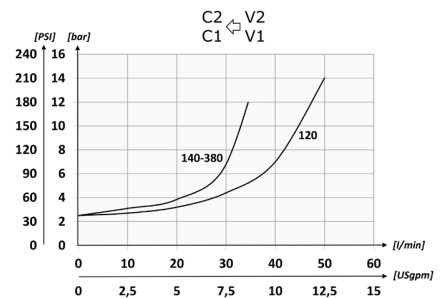
<b>CODICE ORDINAZIONE</b> ORDERING CODE	01	02
	<b>VRDL</b>	

<b>01</b>	VALVOLE DI BLOCCO PILOTATE A DOPPIO EFFETTO (DOUBLE ACTING PILOT CHECK VALVES)	<b>VRDL</b>
<b>02</b>	DIMENSIONE (SIZE)	BSPP 1/4
		BSPP 3/8
		BSPP 1/2

**SCHEMA IDRAULICO / HYDRAULIC CIRCUIT**

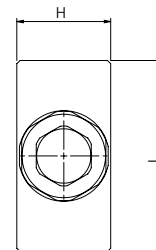
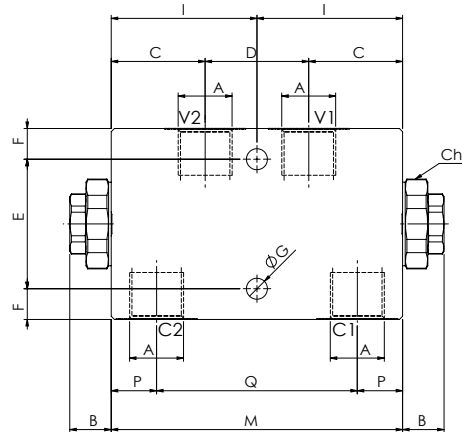


**PERFORMANCES**



**DATI TECNICI / TECHNICAL DATA**

<b>Olio idraulico</b> - Mineral oil	ISO 6743/4 (DIN 51524)
<b>Viscosità olio</b> - Oil viscosity	15-250 mm <sup>2</sup> /s (15 to 250 cSt)
<b>Classe di contaminazione max</b> Max contamination index	ISO 4406:1999 Classe 19/17/14
<b>Temperatura dell'olio</b> - Oil temperature	-20°C +80°C -4°F +176°F
<b>Temperatura ambiente</b> - Environment temperature	-20°C +50°C -4°F +122°F
È indispensabile l'utilizzo di un filtro per proteggere la valvola (filtrazione consigliata 15 µm) It is necessary a filter use to protect the valve (advised filtration 15 µm)	
<b>Trafilamento massimo</b> Max leakage	0,25 cm <sup>3</sup> /min - 5 gocce/min 0,015 in <sup>3</sup> /min - 5 drops/min



[ mm ]  
[ Inches ]

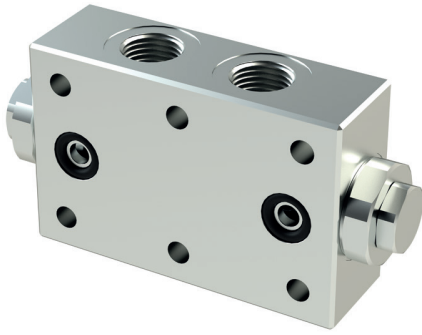
**CARATTERISTICHE TECNICHE / TECHNICAL CHARACTERISTICS**

TIPO TYPE	A	PORTATA MAX MAX FLOW l/min-USgpm	PRESSIONE MAX MAX PRESSURE bar-PSI	B	C	D	E	F	G	H	I	L	M	P	Q	PESO APPROX APPROX WEIGHT kg-lbt	RAPPORTO DI PILOTAGGIO PILOT RATIO
VRDL140N	BSPP 1/4	35 (9.2)	350 (5075)	13	29	32	40	9,5	6,5	29	45	59	90	14	62	1,18 (2.60)	1:7
VRDL380N	BSPP 3/8			(0.51)	(1.14)	(1.26)		(1.57)	(0.37)	(0.26)	(1.14)	(1.77)	(2.32)	(3.54)	(0.55)		
VRDL120N	BSPP 1/2	50 (13.2)		14,8	38	34	14,5	8,5	34	55	69	110	20,5	69	1,77 (3.90)		

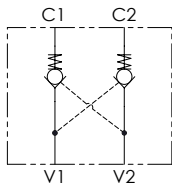
I dati presenti nel catalogo possono essere soggetti a variazioni, pertanto OLEOWEB si riserva il diritto di apporre modifiche in qualunque momento e senza alcun preavviso. OLEOWEB reserves the right to modify the products at any time and without notice: the technical data of the catalogue can consequently change.

Aggiornamento - Update  
21R-2021

**VRDF** VALVOLE DI BLOCCO FLANGIATE A DOPPIO EFFETTO  
DOUBLE ACTING PILOT CHECK VALVES - FLANGED VERSION



SCHEMA IDRAULICO / HYDRAULIC CIRCUIT



DATI TECNICI / TECHNICAL DATA

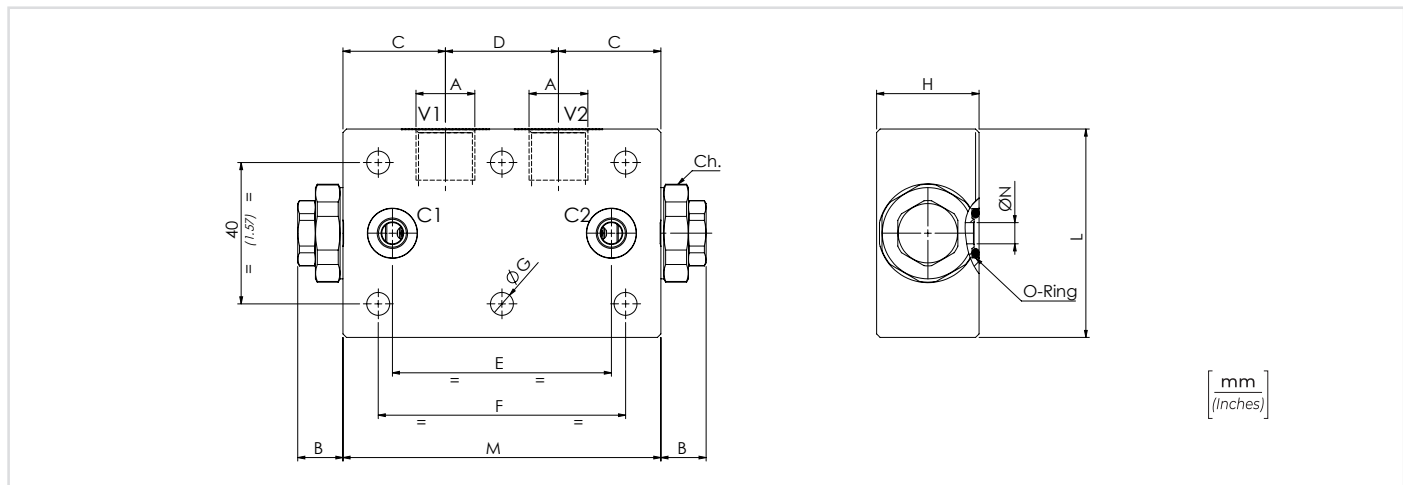
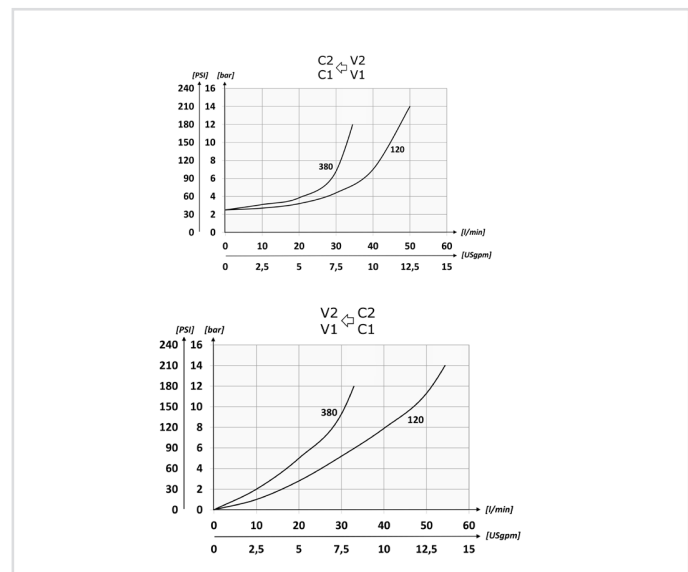
olio idraulico - Mineral oil	ISO 6743/4 (DIN 51524)
Viscosità olio - Oil viscosity	15-250 mm <sup>2</sup> /s (15 to 250 cSt)
Classe di contaminazione max Max contamination index	ISO 4406:1999 Classe 19/17/14
Temperatura dell'olio - Oil temperature	-20°C +80°C -4°F +176°F
Temperatura ambiente - Environment temperature	-20°C +50°C -4°F +122°F
È indispensabile l'utilizzo di un filtro per proteggere la valvola (filtrazione consigliata 15 µm) It is necessary a filter use to protect the valve (advised filtration 15 µm)	
Trafilamento massimo Max leakage	0,25 cm <sup>3</sup> /min - 5 gocce/min 0,015 in <sup>3</sup> /min - 5 drops/min

CODICE ORDINAZIONE  
ORDERING CODE

01	02	03	04	05
<b>VRDF</b>				

<b>01</b>	VALVOLE DI BLOCCO FLANGIATA A DOPPIO EFFETTO (DOUBLE ACTING PILOT CHECK VALVES - FLANGED VERSION)	<b>VRDF</b>
<b>02</b>	DIMENSIONE (SIZE)	BSPP 3/8 <b>380</b>
		BSPP 1/2 <b>120</b>
<b>03</b>	MOLLA (SPRING)	1 bar (14.5 PSI) <b>1</b>
		6 bar (87 PSI) Standard <b>6</b>
<b>04</b>	O-RING SUL PISTONE DI PILOTAGGIO (O-RING ON PILOT PISTON)	Senza o-ring (without o-ring) <b>0</b>
		con o-ring (with o-ring) <b>1</b>
<b>05</b>	RAPPORTO DI PILOTAGGIO (PILOT RATIO)	1:3,2 solo per dimensione 120 (only for size 120) <b>32</b>
		1:7 <b>70</b>

PERFORMANCES



CARATTERISTICHE TECNICHE / TECHNICAL CHARACTERISTICS

TIPO TYPE	A	PORTATA MAX MAX FLOW l/min-USgpm	PRESSIONE MAX MAX PRESSURE bar-PSI	B	C	D	E	F	G	H	L	M	N	O-RING	PESO APPROX APPROX WEIGHT kg-lbt	RAPPORTO DI PILOTAGGIO PILOT RATIO
VRDF380	BSPP 3/8	35 (9.2)	350 (5075)	12,8 (0.50)	29 (1.94)	32 (1.26)	62 (2.44)	70 (2.76)	6.5 (0.26)	34 (1.34)	59 (2.32)	90 (3.54)	Ø 6 (0,24)	9,19x2,62	1,11 (2.44)	1:7
VRDF120	BSPP 1/2	50 (13.2)		14.8 (0.58)	38 (1.50)	34 (1.34)	65 (2.56)	80 (3.15)	8.5 (0.33)		69 (2.72)	110 (4.33)	Ø 7 (0,28)	15,08x2,62	1,85 (4)	1:3,2 1:7